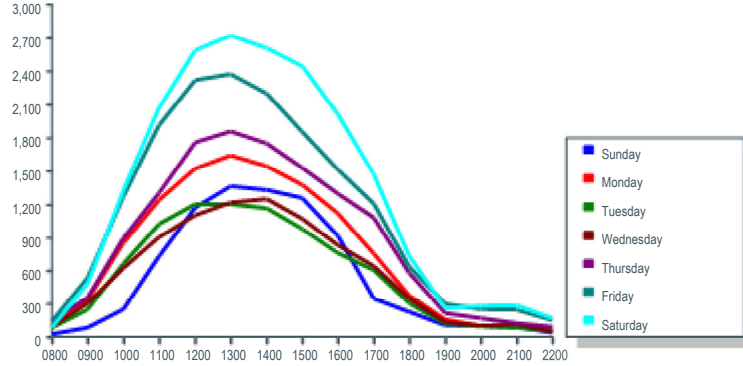
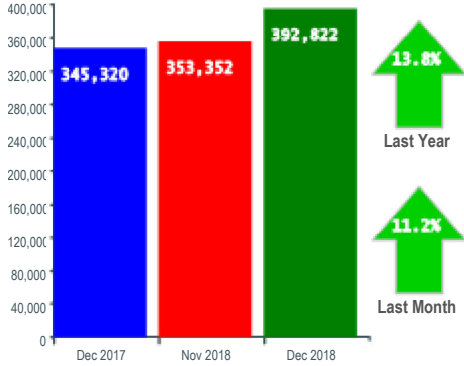


Monthly Report

Month : December 2018

Monthly Comparison

Average Daily Visits

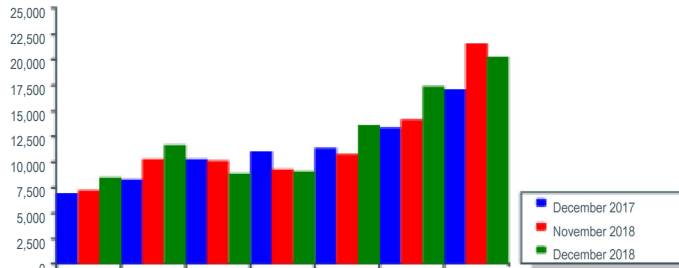
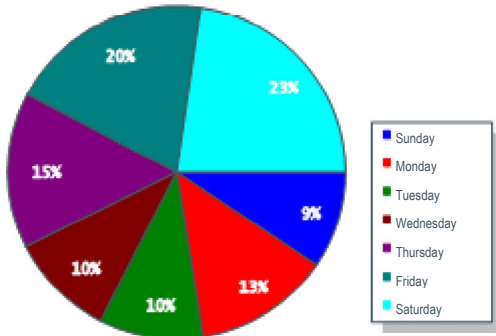


Year	Monthly Average	Year to Date	Pct Change
2016	199,469	729,926	
2017	307,960	3,705,678	407.68 ↑
2018	300,966	3,621,515	(2.27) ↓
2019	308,615	437,487	(87.92) ↓

Period	Sun	Mon	Tue	Wed	Thu	Fri	Sat
08:00 - 11:00	13.3%	21.7%	22.8%	21.1%	19.7%	22.2%	19.9%
11:00 - 14:00	48.2%	42.0%	42.0%	41.1%	41.2%	41.1%	40.7%
14:00 - 17:00	31.5%	29.0%	27.6%	29.4%	30.1%	27.3%	30.5%
17:00 - 22:00	7.0%	7.2%	7.7%	8.5%	9.0%	9.4%	8.9%

Daily Visits - % of Monthly Total

Average Weekly Visits



Month	Sun	Mon	Tue	Wed	Thu	Fri	Sat	Total
November 2018	7,013	10,104	9,951	9,143	10,625	13,959	21,397	82,192
December 2018	8,370	11,479	8,758	8,946	13,401	17,228	20,049	88,231
Pct Change	19.3	13.6	(12.0)	(2.2)	26.1	23.4	(6.3)	7.3

Entrance Visits - % of Monthly Total

Annual Performance

