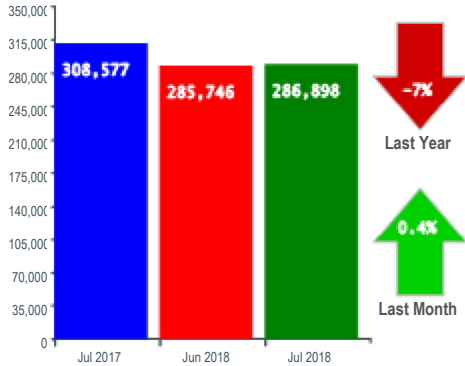


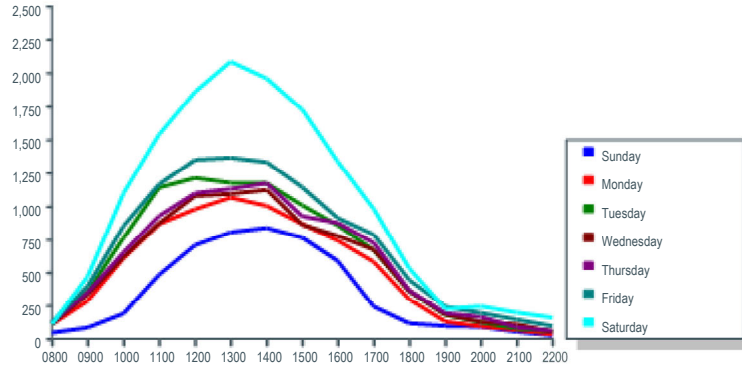
Monthly Report

Month : July 2018

Monthly Comparison



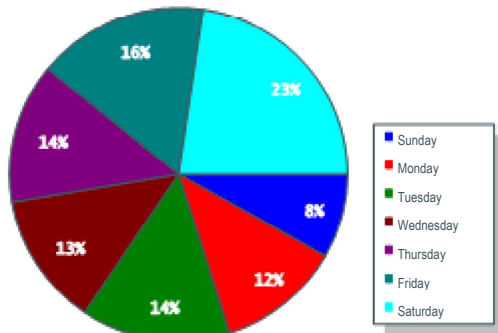
Average Daily Visits



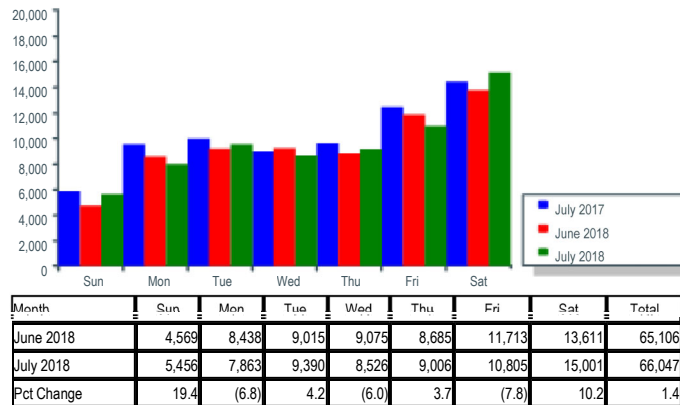
Year	Monthly Average	Year to Date	Pct Change
2016	199,469	0	
2017	307,960	2,107,187	0.00
2018	300,966	1,984,985	(5.80)
2019	308,615	437,487	(77.96)

Period	Cur	Mon	Tue	Wed	Thu	Fri	Sat
08:00 - 11:00	14.8%	23.1%	24.6%	22.1%	22.1%	23.2%	21.6%
11:00 - 14:00	46.2%	39.9%	38.9%	39.8%	39.0%	38.7%	40.9%
14:00 - 17:00	31.3%	28.8%	27.7%	28.0%	29.0%	27.3%	28.1%
17:00 - 22:00	7.7%	8.2%	8.8%	10.1%	9.9%	10.8%	9.4%

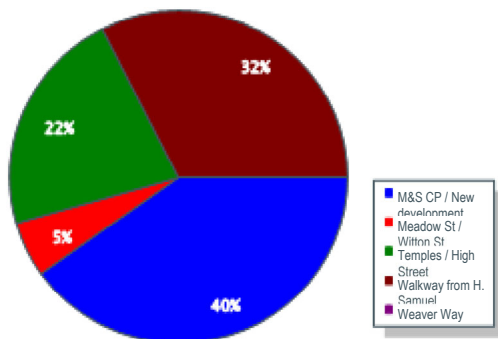
Daily Visits - % of Monthly Total



Average Weekly Visits



Entrance Visits - % of Monthly Total



Annual Performance

