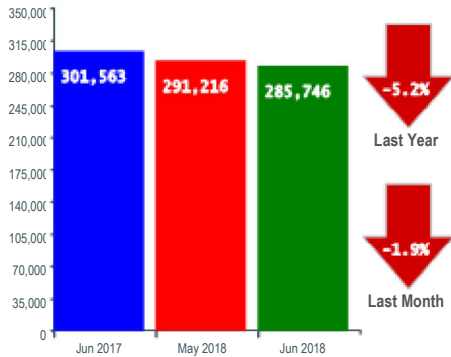


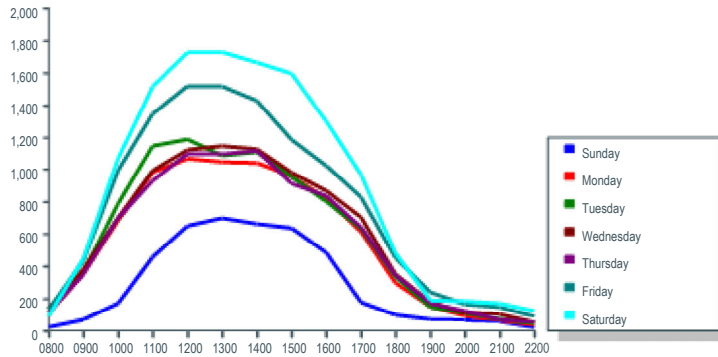
Monthly Report

Month : June 2018

Monthly Comparison



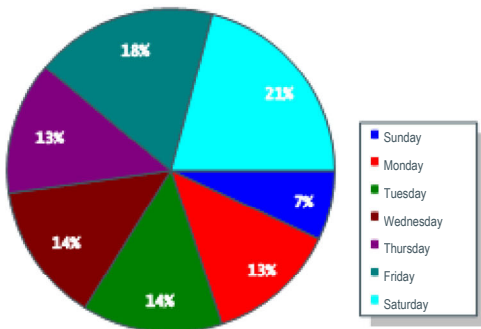
Average Daily Visits



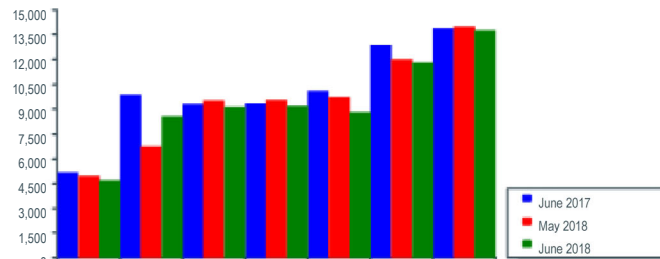
Year	Monthly Average	Year to Date	Pct Change
2016	199,469	0	
2017	307,960	1,798,610	0.00
2018	300,966	1,698,087	(5.59)
2019	308,615	437,487	(74.24)

Period	Sun	Mon	Tue	Wed	Thu	Fri	Sat
08:00 - 11:00	16.1%	24.6%	26.2%	23.5%	23.4%	24.4%	23.0%
11:00 - 14:00	46.4%	38.4%	38.5%	38.5%	39.2%	39.3%	38.9%
14:00 - 17:00	30.0%	29.1%	27.2%	28.9%	28.3%	26.7%	29.4%
17:00 - 22:00	7.4%	7.9%	8.1%	9.0%	9.0%	9.6%	8.7%

Daily Visits - % of Monthly Total

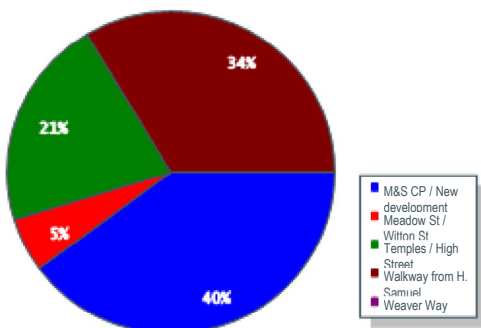


Average Weekly Visits



Month	Sun	Mon	Tue	Wed	Thu	Fri	Sat	Total
May 2018	4,848	6,665	9,397	9,423	9,583	11,902	13,886	65,704
June 2018	4,569	8,438	9,015	9,075	8,685	11,713	13,611	65,106
Pct Change	(5.8)	26.6	(4.1)	(3.7)	(9.4)	(1.6)	(2.0)	(0.9)

Entrance Visits - % of Monthly Total



Annual Performance

