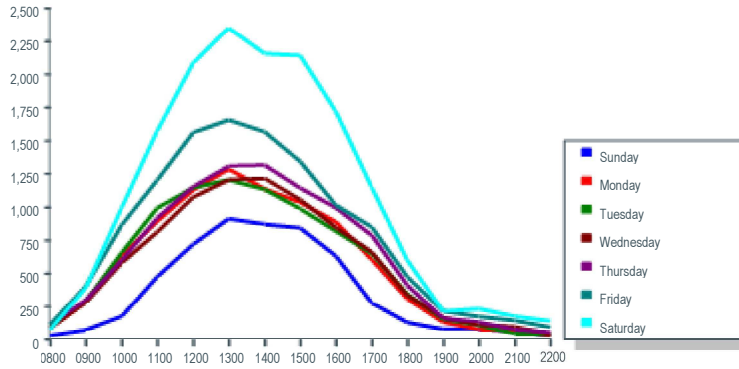
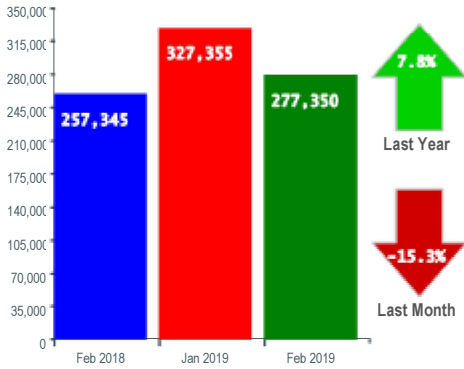


Monthly Report

Month : February 2019

Monthly Comparison

Average Daily Visits

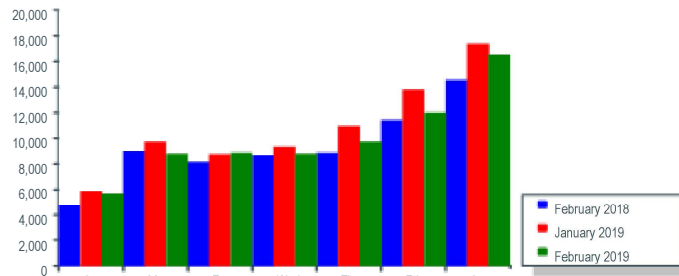
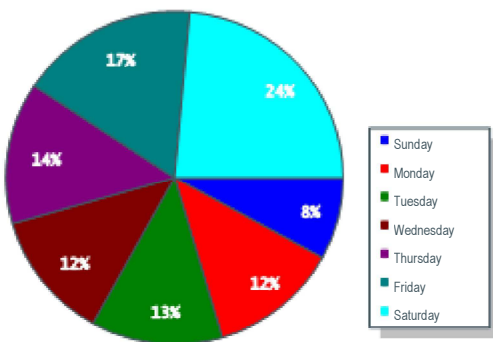


Year	Monthly Average	Year to Date	Pct Change
2017	307,960	533,366	
2018	300,966	530,754	(0.49) ↓
2019	305,454	604,705	13.93 ↑

Period	Sun	Mon	Tue	Wed	Thu	Fri	Sat
08:00 - 11:00	13.4%	21.4%	22.7%	19.7%	19.4%	21.4%	18.6%
11:00 - 14:00	47.1%	41.8%	40.7%	41.3%	40.5%	41.4%	41.4%
14:00 - 17:00	32.9%	29.8%	28.7%	30.3%	31.4%	27.8%	31.5%
17:00 - 22:00	6.6%	7.0%	7.9%	8.6%	8.7%	9.4%	8.5%

Daily Visits - % of Monthly Total

Average Weekly Visits



Month	Sun	Mon	Tue	Wed	Thu	Fri	Sat	Total
January 2019	5,698	9,580	8,613	9,192	10,776	13,639	17,196	74,694
February 2019	5,539	8,638	8,728	8,664	9,590	11,846	16,332	69,337
Pct Change	(2.8)	(9.8)	1.3	(5.7)	(11.0)	(13.1)	(5.0)	(7.2)

Entrance Visits - % of Monthly Total

Annual Performance

